

# ANNUAL REPORT 2010

CENTRAL PLAINS REGIONAL HEALTH CARE FOUNDATION, INC.

## 2010 In Review

**The Central Plains Regional Health Care Foundation** (Central Plains) is a nonprofit affiliate of the **Medical Society of Sedgwick County**. Central Plains' board of directors, staff and community partners continue to be **actively engaged** in local, state-wide and national health issues.

### INITIATIVES

**-Project Access**, which coordinates donated medical care has experienced **increased patient demand** over the last several years.

Thanks to the leadership of **George Lucas, MD**, MSSC's 2010 board president, Project Access signed up **55 new participating physicians**.

**-The Coalition Test Project** coordinates **thousands of donated tests** for many community clinic patients needing diagnostic services.

Both of these programs are funded by grants from the **United Way of the Plains, the City of Wichita** (CSBG funds) and **Sedgwick County**.

**-We continue to provide technical assistance** to many communities initiating their own volunteer-physician programs. They include New Haven, CT, York, PA, Durham, NC and Roanoke, VA.

**-A Sunflower Foundation** grant is funding a **communication and website enhancement project**.

**-The Wichita Commu-**

**nity Foundation** funded a board planning process in April, which led to several strategic goals being implemented this year.

**-And, our board and staff** are assessing how we, in partnership with many community leaders, may help design and implement **local health reform activities**, within the framework of national health care reform legislation passed on March 23, 2010.

Please share questions about this annual report and comments that will **help us improve our services**. We would greatly appreciate your feedback.

Here's to a **meaningful, productive, and healthy 2011** for us all!

### In Memoriam

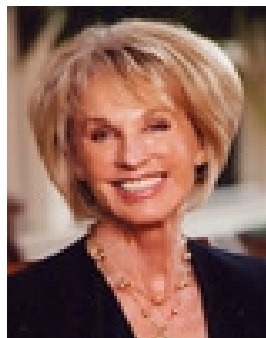
Our saddest news last year was the sudden death of one of Central Plains' founding board members, **Mr. Randall Nevil**. All those who attended and spoke at his overflowing funeral were a testament to Randy's love of family, his dedication to serving the community, his sense of humor and his business success. Randy was survived by his wife, Christine, their two sons and one daughter, four grandchildren and many loving family members and friends.

We thank Chris and her family for designating Randy's memorial donations to Central Plains' Care Transformation Initiative.

We miss Randy but know his positive influence continues on in so many people's lives and within our own organization.

## Physician Leadership in Action

**Linda Francisco, MD** is the Medical Society of Sedgwick County's 2011 board president. **Thomas Bloxham, MD** is Central Plains' 2011 board president. We thank both physicians for their leadership in improving the health of our community.



### Inside this issue:

2010 In Review	1
Physician Leadership	1
Project Access	2
Coalition Test Project	2
Looking Forward	3
Our Board of Directors	4
2010 Financials	4



## Project Access...

**coordinates donated medical care and services** for uninsured members of our community.

Project Access **served 1,865 patients last year**, more than **10,000** to date) and leveraged:

- **8,717** donated physician appointments valued at **\$3.9 million (\$29.4 million)** to date)
- **2,591** donated inpatient

and outpatient hospital appointments valued at **\$12.1 million (\$80 million)** to date)

- **\$278,675** prescription medications and DME purchased (**\$3.9 million** to date)
- **\$312,983** prescription medications donated via pharmaceutical company applications (**\$2.9 million** to date)

- **96%** of patients who returned satisfaction surveys indicated being **satisfied or very satisfied** with Project Access services.

Project Access has the volunteer commitments of more than 600 physicians, 8 hospitals, 75 pharmacies, 12 dentists and the donated services of other providers including physical therapy and hospice care.

“...surely we can do small things to improve the health of our community, one patient at a time.”

George Lucas, MD

## Patients Said:

“I am **grateful** that a program such as Project Access exists. Everyone was so **helpful** and **compassionate**. The doctor and the rest of the staff at the hospital treated me **fairly** and with a lot of **respect**. I don't know what I would have done without them and P.A.”

“There are no words to express my gratitude for

your help. I now have insurance, but will forever be **eternally grateful** to your program.”

“I would like to thank everyone involved with Project Access. They helped me through a very difficult situation and also feel they were involved with **saving my life**. You all are in my prayers. Thank you so very much!!”

“This is the first time in twelve years I have felt **truly healthy**. Thank you.”

“I am very **grateful for the doctors willing to contribute their time** to work with Project Access. Without them, I don't know what I would have done.”

## The Coalition Test Project...

**coordinates thousands of donated diagnostic tests** each year, on behalf of patients being seen at local community clinics, including the three Federally-Qualified Health Centers.

Tests include **labs, X-rays, nuclear medicine, sonograms, MRIs/CTs** and many others, all of which are donated by **hospitals**

**and other providers .**

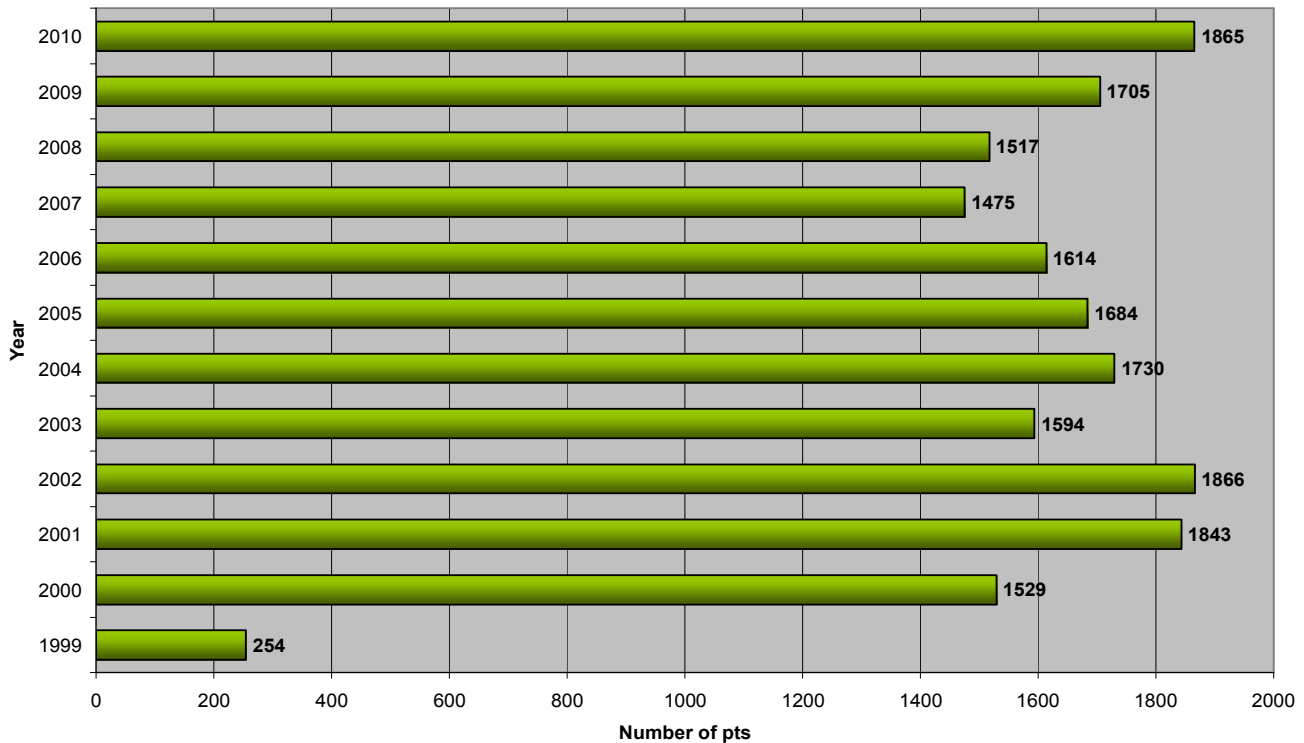
Tests are allocated annually based on each clinic's patient volume, through a voucher system. Staff tracks utilization and provides donating providers with regular reports.

These **diagnostic tests are extremely important** to the clinics in **determining di-**

**agnoses and conditions** affecting their patients. In 2010, nearly 4,000 tests were donated by area hospitals and other providers to patients at seven community clinics. Sonograms, MRIs, CTs, x-rays and EKGs were in the highest demand, with utilization rates of 95-100%.



**Project Access**  
Total patients served per year



## Looking Back, Looking Forward

As we look back on 2010, we wish to thank our many **community partners, true collaborators** who are the reason for a successful year connecting people in need of care with those who provide it.

**Thank you** to our participating **physician offices, hospitals, pharmacies and other service providers**, all of whom donated millions in care last year for the uninsured, our core program funding partners (**United Way of the Plains, City of Wichita, and Sedgwick County**), the **community clinics** providing an extraordinary amount of primary care services to thousands of people each year,

**SRS** for donated staff time to enroll clinic patients into **Project Access**, and the **Medical Society of Sedgwick County** for its leadership and donated office space and administrative support.

In 2011, a new project is underway to **enhance** Central Plains' **communication and online visibility**. We are considering a **name change** and will soon have a new website that should dramatically improve how **local consumers, health care providers** and others learn about our programs and local health reform activities.

We are also assessing

whether our **Community Coverage Initiative** (a non-profit coverage plan for small business owners and their employees) fits best within the new **state insurance exchange** or as a potential new **CO-OP**, part of the ACA legislation that will be implemented in 2014.

Also, we are communicating regularly with elected and appointed state officials to **enhance our visibility** in Topeka, in order to participate in key health care decisions that directly affect our community. Our mission is to assess how we can be a part of improving the health of our community, especially our most vulnerable residents.



Connecting people in need of health care with those who provide it.

1102 South Hillside  
Wichita, Kansas 67211

Phone: 316-688-0600  
Fax: 316-688-0831  
E-mail:  
annenelson@projectaccess.net



Central Plains  
Regional Health Care Foundation  
A NON-PROFIT CORPORATION

PLEASE VISIT OUR WEBSITE!

WWW.PROJECTACCESS.NET

## 2010 Board of Directors

David Grainger, MD: *President*

Thomas Bloxham, MD: *Vice President*

Daniel Caliendo, MD: *Treasurer*

Sister Sherri Marie Kuhn: *Secretary*

Joe Davison, MD

Maurice Duggins, MD

Debra Messamore, MD

Christopher Moeller, MD

Paul Uhlig, MD

Lucynda Raben, DDS

Patrick Hanrahan

Randy Nevil

Barbara Rolph

## 2010 Pre-Audit Financials

### Cash revenue:

**\$781,519**

#### Sources of funds:

- Private contributions
- United Way of the Plains
- City of Wichita (CSBG funds)
- Sedgwick County Health Department
- Wichita Community Foundation

### In-kind donations:

**\$16,929,901**

#### Sources of in-kind:

- Donated physician, dentist and hospital services: \$16,065,553
- Donated prescription medications: \$312,983
- Donated SRS staff time: \$379,020
- MSSC contributed facilities and services: \$41,519

### Cash expenses:

**\$897,411\***

- Salaries and wages: \$394,220
- Benefits and taxes: \$103,676
- Prescription medication and medical equipment purchases: \$278,675
- Other operating expenses: \$120,840

\*\$115,892 expended from cash reserves in 2010



***Please consider a tax-deductible donation.  
Contact us to donate today!***